



**WAG S.A.**

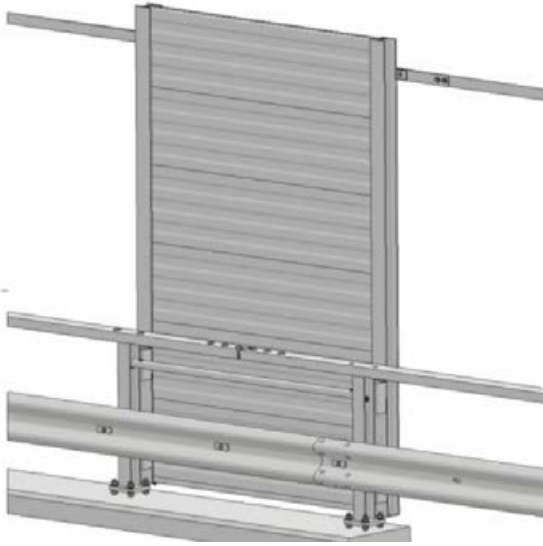
WORLD ACOUSTIC GROUP

## INTEGRATED WAG NOISE BARRIER SB25



**WAG S.A. has over 20 years of experience** in designing and implementing acoustic protection around the world.

# INTEGRATED BARRIER SYSTEM PARAMETERS



## **Safety Parameters:**

- Containment level: H2 (according to hEN 1317-5)
- Impact severity level: B
- Barrier height: e.g. 1.2 m
- Corrosion resistance (galvanized)

## **Structural Parameters:**

- Structure type: steel / aluminum / hybrid
- Foundation type: driven piles / shallow foundations / micropiles
- Maximum span length: 2m
- Wind load resistance (according to Eurocode 1)
- Fire resistance

## **Acoustic Parameters:**

- Sound absorption class: A2–A4 (according to EN 1793-1)
- Airborne sound insulation: B2–B3 (EN 1793-2)
- Sound reduction index:  $R_w$  [dB]
- Acoustic panel height: e.g. 2.0 – 3.0 m

## **Operational Parameters:**

- Long design service life
- Modular component replacement
- Easy of maintenance

# ONE SYSTEM, DUAL PROTECTION – SAFETY WITHOUT COMPROMISE

## Integrated Steel Barriers

### Road safety + noise protection in one integrated system

Integrated Steel Barriers combine a steel vehicle restraint system with acoustic / transparent / anti-glare panels on a shared structure.



### System description

The integrated system consists of:

- a steel safety barrier,
- posts / supporting structure for the panels,
- aluminium acoustic panels, transparent acoustic panels, or anti-glare panels,
- connectors / transition elements for the integrated barrier system.

### Support

We assist with configuration selection (safety + acoustics), choice of panel types, installation approach, and service strategy.

# SYSTEM IS INTEGRATED

## 3 TYPES OF ACOUSTIC SCREEN

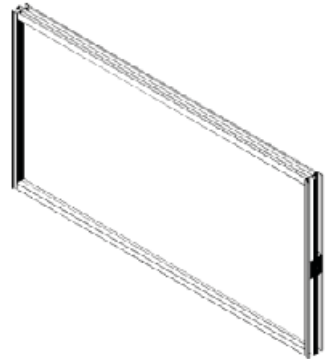
### 1. WAG Noise Catcher WNC C85

Single-sided sound-absorbing aluminum panel, designed to significantly reduce noise levels through high absorption performance.



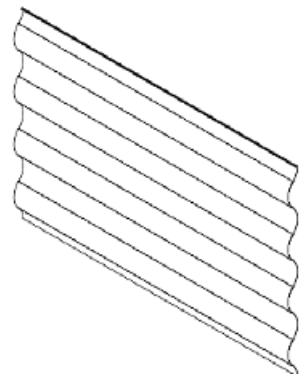
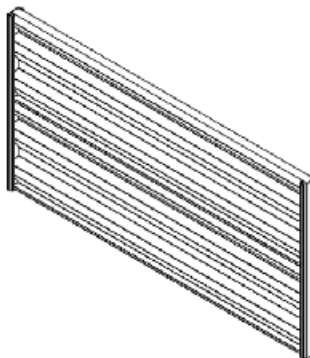
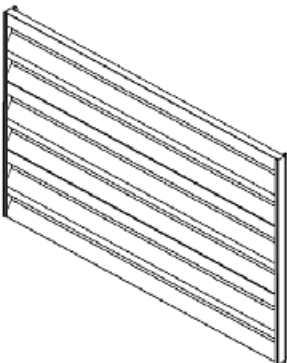
### 2. WNR T – Acoustic Transparent Panels

Transparent panels designed to reduce noise through reflection. Available with various types of infills to ensure visibility and aesthetics.



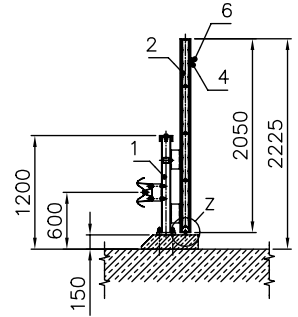
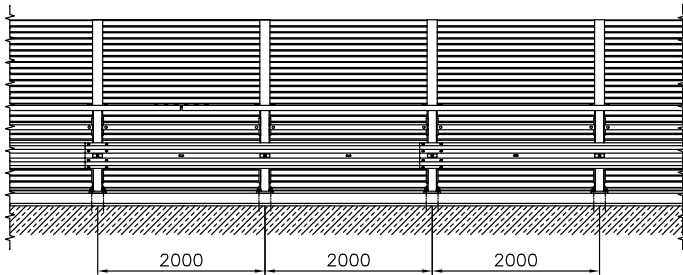
### 3. Anti-glare Aluminum Panels

Designed to prevent blinding by the headlights of oncoming vehicles. We offer 3 distinct types of infills tailored for this specific solution.



# BRIDGE BARRIER WITH TRANSPARENT PANEL WNR T

This "2-in-1" approach increases road safety while reducing traffic noise—often with a smaller footprint and fewer structural elements than using a crash barrier and a separate noise wall.





## RANGE OF ACTIVITIES

- ▶ ACOUSTIC ANALYSIS
- ▶ ACCESSORIES FOR ACOUSTIC SCREENS
- ▶ PRODUCTION OF FILLINGS FOR SOUND-ABSORBING AND SOUND-REFLECTING SCREENS
- ▶ ACOUSTIC ROOF SCREENS
- ▶ INDUSTRIAL SOUND PROTECTION SYSTEMS
- ▶ PRODUCTION OF SELF-SUPPORTING ARCHES FOR RAILWAYS, AGRICULTURE AND INDUSTRY
- ▶ ENGINEERING DESIGN OF SELF-SUPPORTING PALISADE CLADDING SYSTEMS
- ▶ CONSTRUCTION OF FOUNDATION FOR NOISE BARRIERS USING DRIVEN STEEL PILES TECHNOLOGY
- ▶ INTALLATION OF SCREENS IN ROCKY GROUNDS
- ▶ CONSTRUCTION OF SHUTTER WALLS REINFORCED WITH MESH
- ▶ IMPLEMENTATION OF ROAD AND RAILWAY SCREENS

**World Acoustic Group S.A.**

Chróstnik 104, 59-311 Lubin, tel. **0048 767 592 050**

e-mail: **biuro@wagsa.eu**

**wagsa.eu**